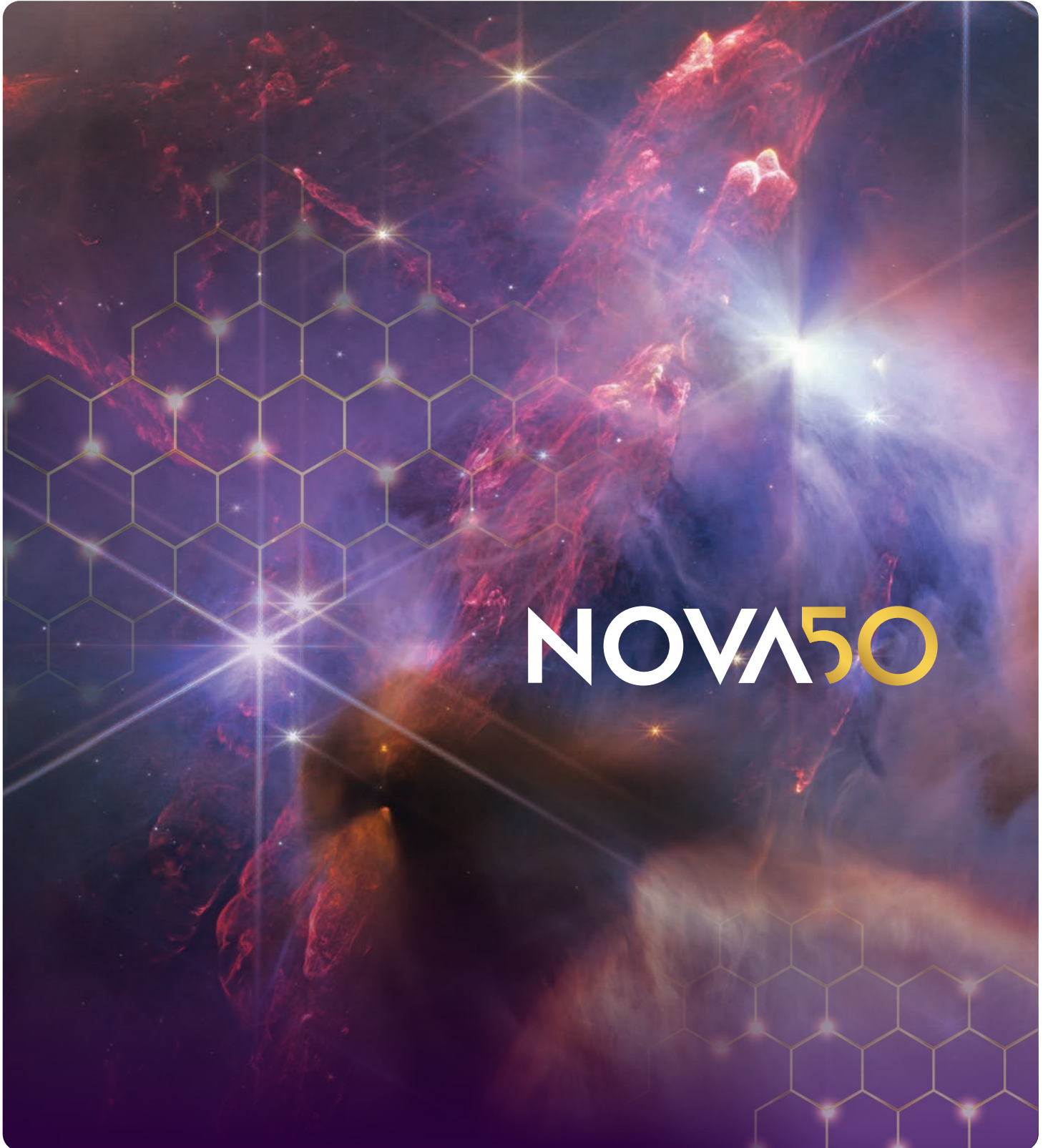


EXPLORE GBH

MAR/APR 2024



What matters to you.



NOVA50

EXPLORE GBH

Editor Katrina Ávila Munichello
Contributors Ron Bachman, Mary Crotty, Daphne Northrop
Designers Tong-Mei Chan, Amy Saidens
Photo Research Leah Weisse
Production Manager Heidi Lewis
Senior Creative Director Piper Rankine
Associate Creative Director Alison Kennedy
Senior Director of Strategic Communications Barbara Ayotte
Chief Marketing Officer Tina Cassidy

March/April 2024 Volume 34, Number 3, (ISSN 2152-7458) (USPS 0008-188). Copyright 2024. WGBH Educational Foundation. One Guest Street, Boston, MA 02135. All rights reserved.

EXPLORE GBH is published monthly by the WGBH Educational Foundation. Subscription is by membership contribution of \$60 or more to GBH. Preferred periodicals postage paid at Boston, MA, and additional mailing offices. POSTMASTER: Send address changes to EXPLORE GBH, GBH, One Guest Street, Boston, MA 02135. Printed in USA. 24CR11482

STAY UP TO DATE

Visit GBH online to find the latest broadcast schedules, programming information, member events and more. Place your mobile phone's camera over this QR code (and others throughout EXPLORE GBH) to learn more.



ON THE COVER

NOVA, America's most popular primetime science series, celebrates its 50th anniversary.

Trust in Science

This month we are celebrating NOVA's 50th anniversary (see page 13). For five decades, the most-watched primetime national science program continues to provide science stories that are central to our lives. At a time when some question basic scientific facts, NOVA focuses on telling accessible stories about how science touches us every day – from the weather we experience and the food we eat to the transportation we use and the technology increasingly embedded in our lives.

NOVA's storytelling asks: What are the big questions driving science? What are scientists discovering? What kinds of science-based, fact-based decisions can we make that will make our lives – and the world – better? These are central questions that NOVA aims to answer in every episode. "Understanding the process of science matters," said NOVA Co-Executive Producer Chris Schmidt. "There is no such thing as a completely settled science question, and it's important that our viewers understand the iterative nature of science."

The transparency and accessibility around how science is done is even more important today than it was 50 years ago. Distrust in media and misinformation are rampant. Many people get their information from unverified, unvetted sources, across a variety of social platforms. NOVA does the opposite, helping our curious audiences "find reliable, accurate, and rigorous information, told in an engaging and entertaining way," said NOVA Co-Executive Producer Julia Cort. And that's true whether you watch us on linear television, the NOVA YouTube channel, our website, or our social platforms.



The newest NOVA project confronts the trust gap head on. With the rise of ChatGPT, the world has been transfixed by the power and potential of the latest generation of artificial intelligence (AI), with its ability to answer complex questions, write essays, generate realistic-looking images – even pass a lawyer's bar exam – all in a matter of seconds. NOVA's film *A.I. Revolution* asks, "Can we harness the power of artificial intelligence to solve the world's most challenging problems without creating an uncontrollable force that ultimately destroys humanity?" Correspondent Miles O'Brien meets scientists using the latest algorithms to accelerate discovery in fields from medicine to climate change and explores how humanity can avoid the worst potential impacts of powerful technologies that we don't fully understand. The film premieres March 27 at 9pm on GBH 2 (see page 8).

Science isn't going anywhere and neither is NOVA. There are many more mind-blowing science stories to tell in the next 50 years. Thanks for watching with us.

▼ Watch NOVA here.



Susan Goldberg
 President & CEO
 GBH

GBH PASSPORT

GBH Passport

GBH Passport is our newest member benefit and your easy-access, on-demand library of public television favorites. GBH members contributing \$60 or more annually enjoy thousands of hours of drama, science, music, history and the arts.

To get started, follow these easy steps:

- 1 Use the four-word activation code that appears on the mailing label of this issue of EXPLORE GBH
- 2 Enter it at gbh.org/activate

Then stream anytime on gbh.org and the PBS App on Apple TV, iOS, Roku, Android, Android TV, Amazon Fire TV, Chromecast and Samsung TV.

TELEVISION

	Digital	Comcast	FiOS	RCN	Cox	Charter	YouTube TV
GBH 2	2.3	2	2	2	2	2	*
GBH 2 HD	2.1	802	502	602	1002	782	n/a
GBH 44	44.2	16	44	14	804	21	n/a
GBH 44 HD	44.1	801	544	n/a	n/a	n/a	n/a
GBH WORLD	2.2	956	473	94	807	181	n/a
GBH CREATE	44.3	959	474	95	805	182	n/a
GBH Kids	44.4	958	472	93	n/a	180	*
Boston Kids & Family (Boston only)	n/a	22	n/a	3	n/a	n/a	n/a

Channel numbers and availability may vary by community. Contact your provider for more information.

Comcast subscribers can access selected GBH programs on GBH On Demand. Go to **Comcast 1**, choose **Get Local**, then **Local Networks**. For more programs, go to **Comcast 1** and choose **History & Nature**, then **PBS-GBH**.

*GBH 2 and GBH Kids are broadcast simultaneously on YouTube TV.

RADIO

GBH 89.7, Boston's Local NPR®
gbhnews.org
 89.7 HD1
 GBH Jazz 24/7
gbh.org/jazz247

CRB Classical 99.5
classicalwcrb.org
 99.5 Boston-NH
 89.7 HD2 Boston
 96.3 Beacon Hill
 88.7 Providence
 90.1 HD2 Cape and Islands

CAI, Cape & Islands
capeandislands.org
 90.1 Martha's Vineyard
 91.1 Nantucket
 94.3 Brewster
 89.7 HD3

All stations are available for streaming on gbh.org/radio

2
CONSIDER THIS
 Trusted science storytelling



4
DON'T MISS
 Learn about the new podcast, events, films and programs in our new initiative, *Reckoning + Repair*, delving into reparations and racial inequities

6
DRAMA 
Call the Midwife returns for Season 13 with four new trainee midwives arriving at Nonnatus House



7
JOURNALISM
A Woman on the Outside, from *America ReFramed*, presents the struggle of keeping families connected when a loved one is incarcerated



8 **9**
SCIENCE **LIVING**
 NOVA explores the world of artificial intelligence (AI) technology and introduces scientists using the latest algorithms in fields from medicine to climate change
 Frederick Wiseman's 44th documentary presents the daily lives of the owners of a French restaurant that has maintained its three Michelin stars through four generations



10
HISTORY & CULTURE
Dante is a landmark documentary by Ric Burns presenting the life and times of Dante Alighieri and his soaring masterpiece, *The Divine Comedy*

12
MEMBERS MATTER
 Check out digital EXPLORE GBH

13
COVER STORY
 NOVA celebrates its 50th anniversary

NOVA50

14
ALL EARS
 Immerse yourself in soulful melodies and vibrant Afro-Cuban rhythms with pianist and composer Zahili Gonzalez Zamora at the next JazzNOW event, on International Jazz Day

16
COMING NEXT MONTH
Freedom Hill from *Local, USA* looks at the ways environmental racism is washing away a North Carolina town

+ 18 **WHAT'S ON**
22 **SAVOR**
23 **CALENDAR OF EVENTS**



 **LOOK FOR WOMEN'S HISTORY MONTH PROGRAMS**

OUR

TIME ON EARTH

Feb. 17–June 9

Reimagine your relationship with the planet through artwork and immersive experiences that reveal a more sustainable future.







Our Time on Earth is produced and curated by the Barbican with guest curators FranklinTill and co-produced by Musée de la civilisation, Québec City, Canada. This exhibition is made possible by Carolyn and Peter S. Lynch and The Lynch Foundation. We thank James B. and Mary Lou Hawkes, Chip and Susan Robie, and Timothy T. Hilton as supporters of the Exhibition Innovation Fund. We also recognize the generosity of the East India Marine Associates of the Peabody Essex Museum, Brigitte Baptiste and Institute of Digital Fashion, *Queer Ecology* (detail), 2022. Installation view of the *Our Time on Earth* exhibition at the Barbican Centre, 2022. © Danann Breathnach Photography.

3 cool things

1 GREAT PERFORMANCES AT THE MET: DEAD MAN WALKING

This Met premiere, based on Sister Helen Prejean's memoir about her fight for the soul of a condemned murderer, combines American composer Jake Heggie's beautiful and poignant music with a brilliant libretto by Terrance McNally. The haunting production is the most widely performed new opera of the last 20 years.

Fri (3/15) at 9pm on GBH 2

2 RECKONING + REPAIR INITIATIVE

As part of GBH's commitment to bringing attention to inequalities and encouraging conversation, this initiative will delve into the challenging topic of reparations in Massachusetts and across the country. Through films, television shows, podcasts and events, GBH shines a light on the debate and discussions around the impact of the nation's legacy of slavery.

← Visit gbh.org/reckoningandrepair to learn more.






3 RFDS: ROYAL FLYING DOCTOR SERVICE

A year after Eliza left Broken Hill behind, the RFDS South East team confronts some of their biggest challenges to date — in the air, on land, with each other and with themselves — set against the isolation, beauty and brutality of the Australian outback.

Season Two
Sun (3/24, 3/31) at 11pm on GBH 2



-  WOMEN'S HISTORY MONTH
-  LOOK FOR HIDDEN GEMS
-  DIGITAL

CAPE 5 COD 5

For all your banking needs,
Cape Cod 5 is here to help.

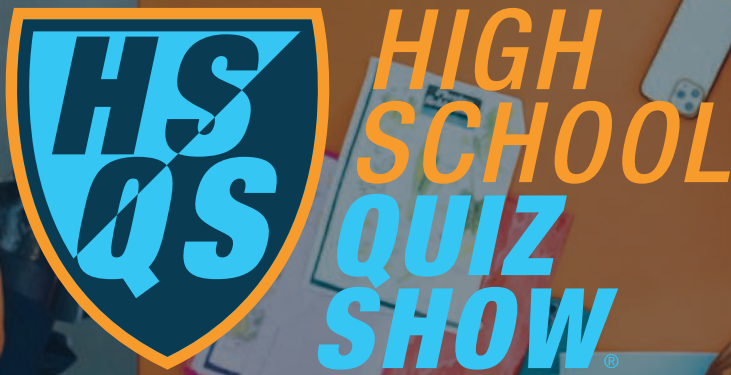
Reach out to us.

capecodfive.com | 888-225-4636

Member FDIC



Safety Insurance is proud to be a Major Sponsor of



Providing comprehensive coverage for
your auto, home, and business.

Visit [SafetyInsurance.com](https://www.safetyinsurance.com)





drama

GBH Passport 

Call the Midwife

As Season 13 opens, it is 1969. In East London, more babies are being born in hospitals than ever before, but the pressure on maternity beds is lessened by the work of the midwives and nuns at Nonnatus House. Four new trainee midwives arrive and try to adjust to living at the convent. The first birth aided by trainee Rosalind Clifford (Natalie Quarry) is complicated when the police arrive to arrest the mother's husband.

Season 13
Sun (3/17, 3/24, 3/31) at 8pm on GBH 2
Repeats:
 Tue (3/19, 3/26) at 8pm on GBH 44
 Sat (3/23, 3/30) at 8pm on GBH 2

GBH Passport 

 HIDDEN GEM

The Brokenwood Mysteries

In the seemingly quiet New Zealand town of Brokenwood, Detective Inspector Mike Shepherd (Neill Rea) finds that shadows lurk beneath the surface. Shepherd and Detective Constable Kristin Sims (Fern Sutherland) investigate suspicious deaths and the secrets that surround them.

Season One
Wednesdays at 9pm on GBH 44



more drama

Midsomer Murders
 Mondays at 8pm
 on GBH 44

Silent Witness
 Mondays at 9pm
 on GBH 44
Repeats:
 Mon (3/11, 3/18, 3/25) at 6pm
 on GBH 44

MASTERPIECE/
Miss Scarlet and The Duke
 Mondays at 10pm
 on GBH 44

Hotel Portofino
 Tue (3/5, 3/12) at
 8pm, 9pm, 10pm
 on GBH 44
Repeats:
 Mon-Fri (3/11-3/15) at 3pm
 on GBH 2

Ms. Fisher's Modern Murder Mysteries
 Thu (3/14, 3/21, 3/28) at 9pm
 on GBH 44

RFDS: Royal Flying Doctor Service
 Mon-Fri (3/18-3/29) at 3pm
 on GBH 2
Repeats:
 Mon-Fri (3/18-3/29) at 5pm
 on GBH 44



GBH Passport 

MASTERPIECE 

Nolly

Noel "Nolly" Gordon (Helena Bonham Carter) was one of the most famous faces on British television in the 1960s and 70s and her unceremonious firing from her hit show at the height of her career was front-page news. A bold exploration of how the establishment can turn on women who refuse to play by the rules, this series is an entertaining ride through Gordon's most tumultuous years and a sharp, affectionate and heartbreaking portrait of a forgotten icon.

Season One
Sun (3/17, 3/24, 3/31) at 9pm on GBH 2
Repeats:
 Tue (3/19, 3/26) at 9pm on GBH 44
 Sat (3/23, 3/30) at 9pm on GBH 2



GBH Passport 

MASTERPIECE

Alice & Jack

Alice (Andrea Riseborough), a single woman invested in her career while grappling with

childhood trauma, and Jack (Domhnall Gleeson), a lonely yet charming scientist, meet in a bar. They're bound by a connection so powerful it seems nothing can break it, but will their path lead them to a place of happiness and togetherness? This series reveals how love plays out between two very different people over 15 years.

Season One
Sun (3/17, 3/24, 3/31) at 10pm on GBH 2
Repeats:
 Tue (3/19, 3/26) at 10pm on GBH 44
 Thu (3/21, 3/28) at 4pm on GBH 44
 Sat (3/23, 3/30) at 10pm on GBH 2



GBH  Passport

 HIDDEN GEM
POV

unseen

Aspiring social worker **Pedro**, an undocumented immigrant and person who is blind, confronts political restrictions and barriers as he pursues his college degree. Developed over seven years, this documentary uses experimental cinematography and sound to push the boundaries of accessibility in cinema.

Co-presented with Latino Public Broadcasting (LPB), this film presents the complicated intersections of immigration, disability and mental health.
Mon (3/18) at 10pm on GBH 2



GBH  Passport

AMERICA REFRAMED

A Woman on the Outside

Growing up, Kristal Bush watched nearly every man in her life disappear to prison. Now, Bush operates a van service in Pennsylvania that drives families to visit loved ones in far-off correctional facilities, her way of fighting to keep families connected. Part observational documentary, part family album, this film is a tender portrait of one family striving to love in the face of a system built to break them.

Thu (3/28) at 8pm on GBH WORLD

GBH  Passport

FRONTLINE

Lethal Restraint

With The Associated Press, FRONTLINE investigates deaths that have occurred after police used tactics like prone restraint and other techniques using “less lethal” force. Drawing on police records, autopsy reports and body cam footage, this documentary presents the most expansive tally of such deaths nationwide.

Tue (3/12) at 10pm on GBH 2

FRONTLINE



GBH  Passport

LOCAL, USA

Minnesota's Alt-Meat Revolution

While plant-based eating has been part of diets for centuries, over the past few decades, plant-based proteins have become increasingly common in mainstream America and elsewhere. This film looks at the roots and the impacts of this growing global phenomenon.

Mon (3/25) at 9pm on GBH WORLD

more journalism

Talking Politics
Fridays at 7pm
on GBH 2

Repeats:
Fri (3/8, 3/15, 3/22, 3/29) at 8:30pm
on GBH 44

Washington Week with The Atlantic
Sundays at 9am
on GBH 44

Repeats:
Fri (3/8, 3/15, 3/22, 3/29) at 8pm
on GBH 44

PBS NewsHour
Mondays–Fridays
at 6pm on GBH 2
Repeats:
Mondays–Fridays
at 11pm on GBH 44

Greater Boston
Mon–Thu (3/4–3/28)
at 7pm on GBH 2

Amanpour and Company
Tue–Thu (3/5–3/28)
at 11pm on GBH 2
Repeats:
Sundays at 9:30am
on GBH 44

America ReFramed/Running with My Girls
Sun (3/31) at 6pm
on GBH 2



NOVA

Polar Extremes

Join renowned paleontologist Kirk Johnson on an epic adventure through time at the polar extremes of our planet. Following a trail of fossils found in all the wrong places — beech trees in

Antarctica and redwoods and hippo-like mammals in the Arctic — NOVA uncovers the bizarre history of the

poles, from miles-thick ice sheets to warm polar forests teeming with life. Johnson uses Earth's history, written in stone, as a cipher to decode what is going on at our polar extremes today and what the future may hold.

Wed (3/20) at 9pm on GBH 2

Repeats:

Sun (3/24) at 8pm on GBH 44

Wed (3/27) at 12pm on GBH 44



GBH  Passport

INDEPENDENT LENS

Greener Pastures

Climate change, globalization and the rise of megafarms have exacerbated economic uncertainty and isolation for American farmers. Following a group of four Midwestern farm families, this film explores the growing mental health crisis in agricultural communities. Produced by award-winning filmmakers Samuel-Ali Mirpoorian and Ian Robertson Kibbe, this story of perseverance and survival won the Grand Prize Jury Award for Best Documentary Feature at Mountainfilm in Telluride in 2023.

Mon (3/25) at 10pm on GBH 2

Repeat:

Sun (3/31) at 6pm on GBH 44

GBH  Passport

 HIDDEN GEM

The Invisible Shield



This series offers an unprecedented look at the public health system that makes modern life possible. The system's impact has been profoundly transformative and its greatest successes have come from cross-disciplinary collaborations between leaders in medicine, science, engineering, activism and government.

Tue (3/26) at 10pm on GBH 2

Repeat:

Sun (3/31) at 9pm on GBH 44

more science

NOVA/*Great Electric Airplane Race*

Wed (3/13) at 12pm on GBH 44

Repeat:

Thu (3/28) at 6pm on GBH 44

NATURE/*Equus: Story of the Horse*

Wed (3/13, 3/20) at 8pm on GBH 2

Repeats:

Tue (3/19, 3/26) at 4pm on GBH 44

NOVA/*Arctic Sinkholes*

Wed (3/13) at 10pm on GBH 2

NATURE/*Remarkable Rabbits*

Wed (3/27) at 8pm on GBH 2

Repeat:

Sat (3/30) at 12pm on GBH 44

science



GBH  Passport

NOVA

A.I. Revolution

With the rise of ChatGPT, the world has been transfixed by the power and potential of the latest generation of artificial intelligence (AI) technology. Correspondent Miles O'Brien meets scientists using the latest algorithms to accelerate discovery in fields from medicine to climate change — some even using AI to build O'Brien a new robotic arm — and explores how humanity can avoid the worst potential impacts of powerful technologies.

Wed (3/27) at 9pm on GBH 2

Fit 2 Stitch Marathon

Join host and sewing expert **Peggy Sagers** and discover ways to get creative with your wardrobe. Whether modifying existing pieces or designing new creations out of whole cloth, you are sure to pick up some tips in this stitching marathon. Sagers shares techniques and helps break down the rules of pattern-making so that sewers of all skill levels can make stylish, well-fitted clothing.

Sat (3/2) at 10am–2:30pm
on GBH Create
Sun (3/3) at 12pm–4:30pm
on GBH Create



Joseph Rosendo's Travelscope

Award-winning travel journalist Joseph Rosendo shares cultural insights and highlights destinations from around the world, promoting the idea that travel is the key to connecting cultures.

Mon–Fri at 7:30am on GBH 44
Repeats:
Mon–Fri (3/11–3/29) at 3:30pm
on GBH 44

more living

Rick Steves' Europe
Mondays–Fridays at
7am on GBH 44
Repeats:
Mondays–Fridays
(3/11–3/29) at 3pm
on GBH 44

The French Chef
Mon–Tue (3/11–3/26)
at 11am on GBH 44

Cook's Country
Fri (3/15, 3/22, 3/29)
at 11:30am on GBH 44
Repeats:
Sat (3/23, 3/30) at
3:30pm on GBH 2

My Greek Table
with Diane Kochilas
Sat (3/23, 3/30) at
2:30pm on GBH 2

Ireland with Michael
Sat (3/23, 3/30) at
4:30pm on GBH 44

Weekends
with Yankee
Sun (3/24, 3/31) at
11:30am on GBH 2
Repeats:
Sun (3/24, 3/31) at
3:30pm on GBH 44



GBH  Passport

 HIDDEN GEM

Menus-Plaisirs: Les Troisgros

The 44th documentary in Frederick Wiseman's series on the human experience, this film explores the daily lives of the family running renowned French restaurant La Maison Troisgros. This restaurant has held three Michelin stars for the past five decades and over four generations. In this four-hour, mostly French-language film, visit the vegetable markets, cheese-making plants and vineyards of central France and the restaurant's inner workings.

Fri (3/22) at 9pm on GBH 2
Repeat:
Sat (3/23) at 8pm on GBH 44



In Julia's Kitchen with Master Chefs

In these classic episodes, Julia Child invites master chefs into her kitchen and details their techniques and the contemporary American dishes they create.

Wed–Thu (3/13–3/28) at 11am
on GBH 44

Living

history & culture



GBH  Passport

ANTIQUES ROADSHOW

LSU Rural Life Museum

Watch as the ANTIQUES ROADSHOW team continues its appraisals at the LSU Rural Life Museum in Baton Rouge, Louisiana. The visit includes a look at a collection of important letters written by noted abolitionists, including Frederick Douglass and Harriet Beecher Stowe.

Mon (3/11, 3/25) at 8pm on GBH 2



GBH  Passport

AMERICAN EXPERIENCE

The Cancer Detectives

There are three main characters in this story of the fight against cervical cancer: Dr. Papanicolaou, a Greek immigrant whose pursuit of a diagnostic test saved hundreds of thousands of women; Hashime Murayama, a Japanese American artist who was detained in a WWII internment camp; and **Dr. Helen Octavia Dickens**, a Black female surgeon who helped heal the trust between Black patients and the medical community. The work of these three life savers slashed death rates for cervical cancer by more than 60 percent.

Tue (3/26) at 9pm on GBH 2

more history & culture

High School Quiz Show

Saturdays at 6pm on GBH 2

Repeats:

Sundays at 1pm on GBH 44

Sundays at 5pm on GBH 2

ANTIQUES ROADSHOW

Tue–Wed (3/12–3/27) at 6pm

on GBH 44

Repeats:

Fri (3/8) at 9:30pm, 10:30pm on GBH 44

Mon (3/11, 3/25) at 8pm, 9pm

on GBH 2

AMERICAN EXPERIENCE/ 

The Sun Queen

Tue (3/12) at 9pm on GBH 2



GBH  Passport

 HIDDEN GEM

AMERICAN MASTERS

Roberta Flack

Follow this music icon from her beginnings performing in a piano lounge through her rise to stardom. From “First Time Ever I Saw Your Face” to “Killing Me Softly” and beyond, **Roberta Flack** gave voice to a global soundtrack of beauty and pain and hope and struggle. This film draws on exclusive access to Flack’s archives and interviews with Rev. Jesse Jackson, Angela Davis, Peabo Bryson and more to share her life and triumphs over racism and sexism within and outside of the recording industry.

Thu (3/21) at 9pm on GBH 2

Repeat:

Sat (3/23) at 6pm on GBH 44



GBH  Passport

Dante

This landmark documentary by Ric Burns explores the riveting life and times of Dante Alighieri (1265–1321) and his soaring masterpiece *The Divine Comedy* — inarguably one of the greatest achievements in the history of

literature. The film chronicles the mesmerizing story that unfolds within the poem itself, how Dante managed to create it in such turbulent times, and how it has been transmitted over time.

Mon–Tue (3/18–3/19) at 8pm on GBH 2

Repeats:

Sat (3/23) at 12pm, 2pm on GBH 44

Mon (3/25) at 12pm on GBH 44

The *Right* Values

in Assisted Living



Resident Quality of Life • Valued Associates
Integrity • Innovation • Discovery



Find a community near you at
SeniorLivingResidences.com

Massachusetts: Ayer, Boston, Bourne, Brockton, Brookline, Cambridge, Canton, Concord, Dorchester, Malden, Methuen, Milford, Westfield

Connecticut: Farmington & Ridgefield

New Hampshire: Hampton

Senior Living Residences communities have been enriching the lives of seniors and their families for more than three decades. Discover why our associates voted us one of Massachusetts' top places to work!



Invest in the public schools and colleges our communities deserve

The Massachusetts Teachers Association is proud to sponsor high-quality educational programming on GBH — and to be a leading advocate for our students, our public schools and colleges, and a more just Commonwealth.

MTA members include teachers, Education Support Professionals, higher education faculty and staff, retired educators and students preparing for careers in education.

MAX PAGE
President

DEB McCARTHY
Vice President

MIKE FADEL
Executive Director-Treasurer

massteacher.org

MTA Massachusetts Teachers Association

STAY CONNECTED

GBH Member Hotline

617-300-3300
Weekdays 9am-5pm
membersonly@wgbh.org

GBH occasionally exchanges its mailing list with other nonprofit organizations. To opt out, please call our Member Hotline, email us (see above) or write: GBH Member Services, One Guest Street, Boston, MA 02135.

24-Hour Program Feedback Line

617-300-5200

GBH Champions Circle Member Line

617-300-3505
champions_circle@wgbh.org

GBH Beacon Circle Concierge Line

617-300-3900
beacon_circle@wgbh.org

Gift Planning and Endowment Hotline

1-800-220-7122
gift_planning@wgbh.org

Local Corporate Sponsorship and Advertising

617-300-3727
ted_petersen@wgbh.org
gbh.org/sponsorship



Mailing address for Gifts and Correspondence

GBH Membership
PO Box 55875, Boston, MA
02205-8264

openvault.wgbh.org

Visit The Linda and Andrew Egendorf
Masterpiece Theatre
Alistair Cooke Collection

MEMBERS MATTER

DIGITAL EXPLORE GBH: SEE VIDEO PREVIEWS AND MORE



Visit the digital edition of **EXPLORE GBH** and get immediate access to video trailers, previews and even more content about your favorite shows and films.



DON'T MISS OUT ON EXPLORE GBH



The April edition of EXPLORE GBH will be digital-only, filled with new highlights and video promos as well as the latest primetime television schedules. Shown, coming in April, MASTERPIECE's *Mr Bates vs The Post Office*.

Make sure you get your copy by updating your preferred email address with us at info@wgbh.org. We'll email you a link as soon as the issue is ready to access.



Got Questions? We're here.

We're here to answer any questions you have about accessing all the digital versions of EXPLORE GBH. Don't hesitate to contact us at info@wgbh.org or call or text us at 617-300-3300 Monday-Friday, 9am-5pm.

Music Worcester brings the world to Central MA in 2024



Mnozil Brass

Fri Mar 1



Orchestre Métropolitain
Yannick Nézet-Séguin, director

Sun Mar 3



Natalie MacMaster & Donnell Leahy

Sat Mar 9



American Spiritual Ensemble

Sat Apr 6



Bach Mass in B minor
The Worcester Chorus

Sun May 5



Marc-André Hamelin
pianist in recital

Thu May 9



Frank Vignola & Tessa Lark

Sat May 18

Explore the season and learn more at MUSICWORCESTER.ORG



Natural history. Physics. Astronomy. Medicine. Math. Engineering. Climate science.

NOVA 50

Over its 50-year history, NOVA has presented discoveries and mind-blowing science phenomena in each of these disciplines and many more. But the true mission of NOVA was never just about broadcasting new discoveries. Rather, it has been about sharing the stories behind the science.

In the early 1970s, GBH producer Michael Ambrosino was inspired to create NOVA after seeing a BBC television show called *Horizon*. NOVA Co-Executive Producer **Julia Cort** said,

“There really wasn’t a regular weekly science show that covered science in depth in the U.S. at the time. It was a gamble, whether people would watch it.” But from the earliest episodes, the tale was truly the focus.

“You want there to be cool and interesting science, but there has to be a good story,” Cort says. “There has to be motivation, a question, and then steps along the way – ups and downs, challenges, dramatic tension, and then a resolution, an ending that reveals something that you didn’t know before.”

NOVA Co-Executive Producer **Chris Schmidt** thinks the program’s longevity is directly related to this format. “We know people are interested in hearing about scientific discoveries. But NOVA is, in a way, a 50-year-long experiment asking the question: ‘Are people also interested in stories about *how*

science is done? How the body of human knowledge actually grows?’” And people were indeed interested.

Five decades later, NOVA is the most popular primetime science series on American television. This multimedia, multiplatform brand reaches more than 55 million Americans each year on television and across digital platforms – and has been honored with every major broadcast industry award. “Our audience is entertained by having their curiosity scratched...being surprised and feeling inspiration in what human beings can achieve with just their minds,” says Schmidt.

This insatiable curiosity makes the role of a NOVA filmmaker even more exciting. “There are very few topics that our audience is not enthusiastic about,” says Schmidt. “Personally, I take a lot of pride in making NOVAs about topics that are difficult to visualize. It’s satisfying to find a creative way to take what seems dry or complicated and find the compelling story within. One of my favorite examples is a film called *The Great Math Mystery*, which was basically asking the question, ‘Is math invented or discovered?’ It was a very powerful, beautiful film.”

While NOVA was originally imagined as a show for adults, it quickly became clear that there was a tremendous opportunity to expand its reach to schools. The NOVA collection on PBS LearningMedia offers more than 1,000 resources from the program’s broadcast and digital productions for teachers to bring into their classrooms. In 2018, the team launched NOVA Science Studio, a science journalism program for high school students, teaching young people the skills needed to create their own short-form videos about science issues that are meaningful to them.

The NOVA team believes that helping viewers see scientists as real people and science as a process increases the public’s trust in the information they see. One important strategy to reach audiences has been exploring new platforms. “Our shows are popular on television with a certain demographic, but we’ve been able to demonstrate that our content is popular much more broadly than that,” says Schmidt. “Once you move it someplace else like YouTube or TikTok, you get younger audiences and they’re just as engaged.”

There is no limit to where NOVA can go next. “Science and technology are central to our lives,” says Cort. “They impact us every day...Think about all the ways we communicate, our transportation, the devices we use, the medicine we take, the food we eat, the weather we experience...In order to have a just and functioning society, people need to be well-informed about science and technology, how it works and what it can tell us about our world.”

“50 years young, NOVA is going strong,” adds Schmidt, “because there is a huge appetite for what we do. As long as science continues to contribute to our understanding of the world we live in and as long as people stay curious, the future looks bright.”

➤ [Visit here to learn more about NOVA and its 50 years of engaging content.](#)



One of Chris and Julia’s favorite NOVA episodes, *Polar Extremes*, airs Wed (3/20) at 9pm on GBH 2.



GBH Music | CRB Classical 99.5

Hilary Hahn with the Boston Symphony Orchestra



On April 20, experience the Boston Symphony Orchestra live on CRB with host Brian McCreath for a concert featuring one of the greatest works in the classical repertoire, Brahms's "Violin Concerto," performed by one of the world's finest artists, **Hilary Hahn**. The program also includes a new work, "Archora," inspired by the primordial energy of composer Anna Thorvaldsdottir's homeland, Iceland. Conductor Andris Nelsons and the BSO open the evening with Mozart's delightful Symphony No. 33.

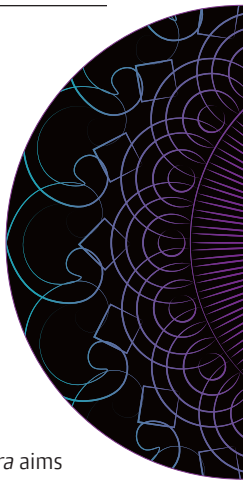


◀ Listen here –
Sat (4/20) at 8pm,
Mon (4/29) at 8pm
on CRB Classical 99.5.

GBH Music

Getting Into Opera

GBH Music will introduce new listeners to opera in a video series produced in collaboration with Boston Lyric Opera (BLO) and New England Conservatory (NEC). Designed for newcomers and seasoned enthusiasts, *Getting Into Opera* aims to ignite a passion for the genre by showcasing how powerful performances are shaped by vocal coaching and stage direction. Episode Two of the innovative multiplatform video series films in front of a live audience in GBH's acoustically acclaimed Fraser Performance Studio on March 7. The evening features some of the most emotionally resonant arias ever written.



Learn more. ▶

music

GBH Music | JazzNow

Afro Cuban Rhythms of Resilience with Zahili Gonzalez Zamora

On International Jazz Day, April 30, immerse yourself in soulful melodies, vibrant Afro Cuban rhythms and extraordinary piano improvisation. Pianist, composer and arranger **Zahili Gonzalez Zamora** is a leading force in modern Latin jazz. Audiences will hear selections from *MIXCLA*, Zamora's Afro Cuban jazz album featuring original tunes and arrangements that draw inspiration from her rich musical journey. Presented by GBH Music and JazzBoston.



◀ Register for the event here (in-person and virtual).

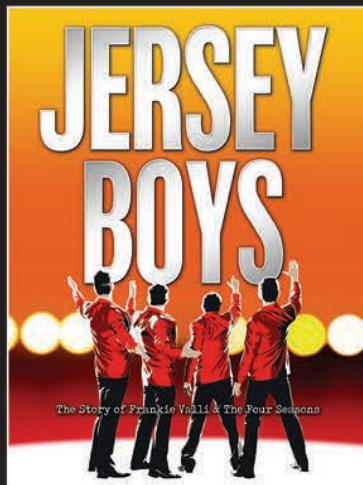


BILL HANNEY'S
NORTH SHORE
MUSIC THEATRE

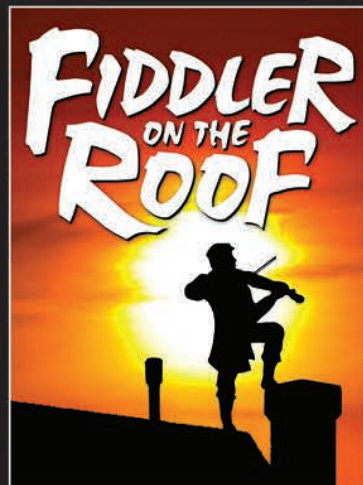


2024 MUSICAL SEASON
5 & 3-SHOW PACKAGES
AND SINGLE TICKETS ARE
ON SALE NOW!

978.232.7200 | NSMT.ORG
54 DUNHAM RD • BEVERLY • MA



MAY 7 - MAY 19



JUNE 4 - JUNE 16



JULY 9 - JULY 21

GBH News' New Equity and Justice Unit

A sustainable commitment to covering New England's most pressing inequities requires investment — in people, time, training and especially in listening to the affected communities. GBH News' new Equity and Justice unit will create six roles for journalists dedicated to covering regional and national racial and socioeconomic disparities. To deepen the impact of the Equity and Justice unit's multiplatform reporting, GBH News will build and expand community relationships through statewide events, partnerships with community-based media of color and engagement with community leaders.



GBH News Executive Editor **Lee Hill** will oversee the unit. "There is so much room to grow when it comes to elevating marginalized voices and connecting their stories with audiences that are hungry to understand the roots of systemic inequities," says Hill. "We look forward to building a robust reporting system that is highly tuned to seeking and digging deeper into issues that divide communities, into those that thrive and those that flounder, with an eye on creative solutions to bridge equity and opportunity gaps across the state."



[▲ Learn more here.](#)



Meet Adam Reilly

Adam Reilly is a political reporter who hosts GBH's *Talking Politics*, a panel-based television series featuring conversations with local political newsmakers, influencers, analysts and activists. He's frequently contributed to *Greater*

Boston and *Boston Public Radio*, and his work has also been picked up by *The Takeaway* and *PBS NewsHour*. Raised in Minnesota, he is a graduate of Carleton College and Harvard Divinity School.

[Read more here. ►](#)



New Limits on Beachfront Homes

Massachusetts' coastal floodplain, mostly low-lying areas that are potentially inundated with water during storms, currently includes about \$55 billion worth of infrastructure like homes and businesses.

According to a report by CAI's Eve Zuckoff, proposed regulations from the Massachusetts Department of Environmental Protection (MassDEP) would limit new homes from being built along these areas to better prepare for climate change. The regulations would impact new development in areas where waves tend to reach over three feet or where the most storm damage typically occurs.



"The ideal is that we would be preserving the natural shoreline so that wave energy and tidal changes are impacting the coast naturally," said Kathy Baskin, assistant commissioner at MassDEP's Bureau of Water Resources, "instead of just barreling into the built environment and causing greater erosion."

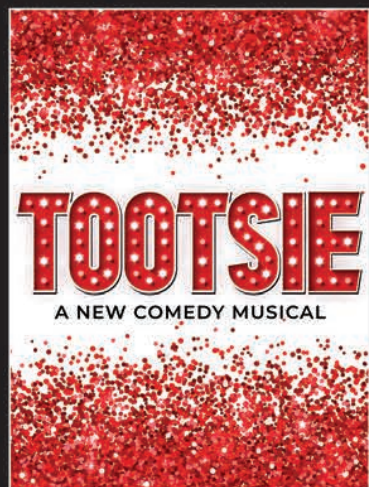
MassDEP Commissioner Bonnie Heiple notes that because the majority of the floodplain is already developed or covered by other regulations for beaches and wetlands, only about 10% of the most vulnerable parts of the floodplain will be subject to these new development restrictions.

"It's actually quite a small slice when you see the mapping. It's little bits and pieces of the coastline that are still available," she said. "We think it's really important that we're not continuing to build in those areas."

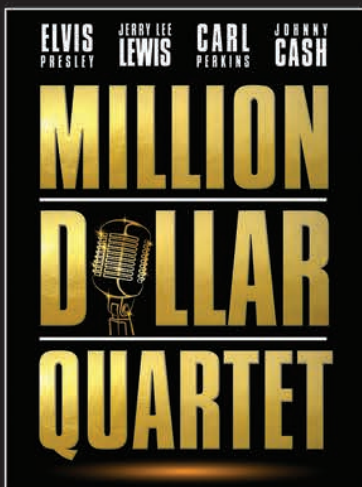
[Read/listen to the story here. ►](#)



stories



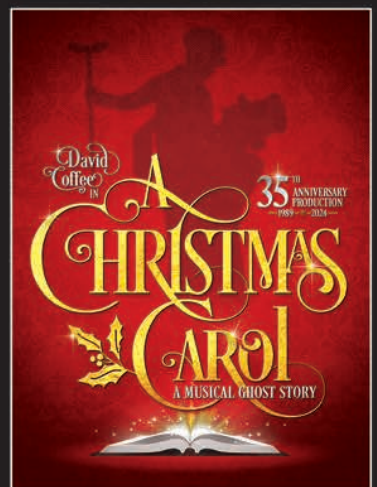
AUGUST 13 - AUGUST 25



SEPTEMBER 24 - OCTOBER 6



OCTOBER 29 - NOVEMBER 10



DECEMBER 5 - DECEMBER 22

Coming in April

Here is a selection of some of our favorite new titles coming in April. Watch these and more.



▲ **Local, USA/Freedom Hill**

Princeville, North Carolina was the first town incorporated by freed, formerly enslaved Africans in America. But now this historic community is facing the impacts of climate change and environmental racism as each flood washes away a bit more of the town and challenges the ability of residents to remain.

▶ **Great Performances/ Now Hear This, Season 5**

Chief Conductor of the Mexico City Philharmonic and violinist **Scott Yoo** opens the world of classical music to new audiences by combining storytelling, travel and spectacular music performances.



▼ **AMERICAN EXPERIENCE/Poisoned Ground: The Tragedy at Love Canal**



The Love Canal disaster was one of the largest and most impactful public health and environmental crises in American history. In 1977, residents on the east side of Niagara Falls noticed odors in

their homes. Soon, dozens of families began to suffer. The battle for justice, led mostly by women, informed the policies of the federal Superfund program that today oversees the remediation of more than 1,300 dangerous hazardous waste sites.

◀ **A Brief History of the Future**

Weaving together history, science and unexpected storytelling, this six-part documentary will help viewers imagine — and work toward — a better tomorrow. The series challenges the dystopian framework embraced by popular culture, exploring potential solutions to our existential threats. Viewers will imagine a world full of discovery, hope and possibility and be inspired to understand their power to shape the future.

▼ **Check the schedule.**



Among all of our hidden gems, winter is possibly our best-kept secret.



DISCOVER
NEWPORT
RHODE ISLAND
DiscoverNewport.org

\$3.4 BILLION
IN MASSACHUSETTS
ALONE



\$20 BILLION
of unclaimed money
ACROSS THE UNITED STATES



290K
HAVE AN UNCLAIMED
CHECKING ACCOUNT
BALANCE

1617 OF THEM
ARE NAMED
elizabeth

1 OF THEM
JUST GOT
HER MONEY
BACK
today!



LOOK FOR your name VISIT
FINDMASSMONEY.GOV



OFFICE OF THE STATE TREASURER
AND RECEIVER GENERAL

MARCH 2024

primetime

GBH 2 GBH 44 WORLD @create

livestream GBH 2 on YouTubeTV

	8pm	8:30pm	9pm	9:30pm	10pm	10:30pm	
1 FRI	2	(7:30pm) Member Favorites					
	44	(11am) Member Favorites					
	World	American Experience <i>Fly with Me</i>			PBS NewsHour		
	Create	America's Test Kitchen	Table for All with Buki Elegbede	Fit 2 Stitch	Fit 2 Stitch	Fit 2 Stitch	Fit 2 Stitch
2 SAT	2	(6:30pm) Member Favorites					
	44	(11am) Member Favorites					
	World	American Masters <i>Marian Anderson</i>			Eyes on the Prize <i>Power! 1966-1968</i>		
	Create	No Passport Required		Best of the Joy of Painting	Best of the Joy of Painting	Richard Bangs' Adventures <i>Norway</i>	
3 SUN	2	(5:30pm) Member Favorites					
	44	(1:30pm) Member Favorites					
	World	Nature <i>Australian Bushfire Rescue</i>		Pacific Heartbeat <i>Daughters of the Waves</i>		Groundbreakers	
	Create	No Passport Required		Fit 2 Stitch	Fit 2 Stitch	Richard Bangs' Adventures <i>Pearl River Delta</i>	
4 MON	2	(7:30pm) Member Favorites					
	44	Midsomer Murders <i>Season One, Death of a Hollow Man, Part Two</i>		Silent Witness <i>Season 25, Episode One</i>		Masterpiece <i>Miss Scarlet and The Duke, Season One, Episode One</i>	
	World	Girl Talk: A Local, USA Special			Stories from the Stage	PBS NewsHour	
	Create	America's Test Kitchen	Table for All with Buki Elegbede	Fit 2 Stitch	Fit 2 Stitch	Rick Steves' Europe	Fly Brother w/Ernest White II
5 TUE	2	(7:30pm) Member Favorites					
	44	Hotel Portofino <i>Season Two, Episode One</i>		Hotel Portofino <i>Season Two, Episode Two</i>		Hotel Portofino <i>Season Two, Episode Three</i>	
	World	American Experience <i>Rachel Carson</i>			PBS NewsHour		
	Create	Milk Street Television	Table for All with Buki Elegbede	Fit 2 Stitch	Fit 2 Stitch	Rick Steves' Europe	Joseph Rosendo's Travelscope
6 WED	2	(7:30pm) Member Favorites					
	44	Sister Boniface Mysteries <i>Season Two, Episode Nine</i>		Brokenwood Mysteries <i>Season One, Episode One</i>		British Antiques Roadshow	
	World	(7pm) POV <i>Eat Your Catfish</i>			American Masters <i>Becoming Helen Keller</i>		PBS NewsHour
	Create	Lidia's Kitchen	Table for All with Buki Elegbede	Fit 2 Stitch	Fit 2 Stitch	Rick Steves' Europe	Ireland: County by County
7 THU	2	(7:30pm) Member Favorites		PBS NewsHour: State of the Union			
	44	Father Brown <i>Season 10, Episode Seven</i>		Miss Fisher's Murder Mysteries <i>Season One, Episode One</i>		Broadchurch	
	World	Eyes on the Prize <i>Ain't Gonna Shuffle No More 1964-1972</i>		Eyes on the Prize <i>A Nation of Law? 1968-1971</i>		Pacific Heartbeat <i>Daughters of the Waves</i>	
	Create	Milk Street Television	Key Ingredient w/Sheri Castle	Fit 2 Stitch	Fit 2 Stitch	Rick Steves' Europe	Joseph Rosendo's Travelscope

WHAT'S ON

8 FRI	2	(7:30pm) Member Favorites					
	44	Washington Week w/The...	Talking Politics	Firing Line with M. Hoover	Antiques Roadshow <i>Bismarck, Hour One</i>	Antiques Roadshow	
	World	Becoming Frida Kahlo <i>Love and Loss</i>		Becoming Frida Kahlo <i>A Star Is Born</i>		PBS NewsHour	
	Create	America's Test Kitchen	Key Ingredient w/Sheri Castle	Joseph Rosendo's Travelscope	Joseph Rosendo's Steppin' Out	Joseph Rosendo's Travelscope	Joseph Rosendo's Steppin' Out
9 SAT	2	(6:30pm) Member Favorites					
	44	(12pm) Member Favorites					
	World	American Masters <i>How It Feels to Be Free</i>				Eyes on the Prize <i>Ain't Gonna Shuffle No More 1964-1972</i>	
	Create	No Passport Required		Best of the Joy of Painting	Best of the Joy of Painting	Richard Bangs' Adventures <i>Switzerland</i>	
10 SUN	2	(5:30pm) Member Favorites					
	44	(1:30pm) Member Favorites					
	World	Nature <i>Sharks of Hawaii</i>		Fanny: The Right to Rock			Facing the Laughter
	Create	No Passport Required		Joseph Rosendo's Travelscope	Joseph Rosendo's Steppin' Out	Richard Bangs' Adventures <i>Egypt</i>	
11 MON	2	Antiques Roadshow <i>LSU Rural Life Museum, Hour Two</i>		Antiques Roadshow <i>Birmingham, Hour Two</i>		American Masters <i>Mae West: Dirty Blonde</i>	
	44	Midsomer Murders <i>Season One, Faithful Unto Death, Part One</i>		Silent Witness <i>Season 25, Episode Two</i>		Masterpiece <i>Miss Scarlet and The Duke, Season One, Episode Two</i>	
	World	Schille	Marguerite	Cara Romero: Following the...	Stories from the Stage	PBS NewsHour	
	Create	America's Test Kitchen	Key Ingredient w/Sheri Castle	Joseph Rosendo's Travelscope	Joseph Rosendo's Steppin' Out	Rick Steves' Europe	Fly Brother w/Ernest White II
12 TUE	2	Finding Your Roots <i>Things We Don't Discuss</i>		American Experience <i>The Sun Queen</i>		Frontline <i>Lethal Restraint</i>	
	44	Hotel Portofino <i>Season Two, Episode Four</i>		Hotel Portofino <i>Season Two, Episode Five</i>		Hotel Portofino <i>Season Two, Episode Six</i>	
	World	Nova <i>Picture a Scientist</i>				PBS NewsHour	
	Create	Milk Street Television	Key Ingredient w/Sheri Castle	Joseph Rosendo's Travelscope	Joseph Rosendo's Steppin' Out	Rick Steves' Europe	Joseph Rosendo's Travelscope
13 WED	2	Nature <i>Equus: Story of the Horse, Episode One</i>		Nova <i>Hidden Volcano Abyss</i>		Nova <i>Arctic Sinkholes</i>	
	44	Sister Boniface Mysteries <i>Season Two, Episode 10</i>		Brokenwood Mysteries <i>Season One, Episode Two</i>			British Antiques Roadshow
	World	(7pm) Birthing Justice	POV <i>Midwives</i>				PBS NewsHour
	Create	Lidia's Kitchen	Key Ingredient w/Sheri Castle	Joseph Rosendo's Travelscope	Joseph Rosendo's Travelscope	Rick Steves' Europe	Ireland: County by County
14 THU	2	This Old House	Ask This Old House	Independent Lens <i>Storming Caesars Palace</i>			Fannie Lou Hamer: Stand Up
	44	Father Brown <i>Season 10, Episode Eight</i>		Ms. Fisher's Modern Murder Mysteries <i>Season One, Episode Four</i>			British Antiques Roadshow
	World	Eyes on the Prize <i>The Keys to the Kingdom 1974-1980</i>		Eyes on the Prize <i>Back to the Movement 1979-Mid 80s</i>		PBS NewsHour	
	Create	Milk Street Television	Key Ingredient w/Sheri Castle	Joseph Rosendo's Travelscope	Joseph Rosendo's Travelscope	Rick Steves' Europe	Joseph Rosendo's Travelscope
15 FRI	2	Stories from the Stage	My Music with R. Giddens	Great Performances at the Met <i>Dead Man Walking</i>			
	44	Washington Week w/The...	Talking Politics	Firing Line with M. Hoover	Frontline		TBA
	World	(7pm) Bella	American Masters <i>Twyla Moves</i>			PBS NewsHour	
	Create	America's Test Kitchen	Key Ingredient w/Sheri Castle	Bare Feet w/Mickela Mallozzi	S. Brown Places to Love	Family Travel w/Colleen Kelly	Joseph Rosendo's Travelscope
16 SAT	2	(6:30pm) Member Favorites					
	44	(12pm) Member Favorites					
	World	American Masters <i>Roberta Flack</i>			POV Shorts <i>This Sacred Place</i>	Eyes on the Prize <i>The Keys to the Kingdom 1974-1980</i>	
	Create	The Legacy List		Best of the Joy of Painting	Best of the Joy of Painting	Hidden Ireland	

MARCH 2024

primetime

GBH 2 GBH 44 WORLD @create

livestream GBH 2 on YouTubeTV

	8pm	8:30pm	9pm	9:30pm	10pm	10:30pm	
17 SUN	2	Call the Midwife Season 13, Episode One		Masterpiece Nolly, Season One, Episode One		Masterpiece Alice & Jack, Season One, Episode One	
	44	(1:30pm) Member Favorites					
	World	Nature Equus: Story of the Horse, Episode One		Finding Your Roots Things We Don't Discuss		American Masters Mae West: Dirty Blonde	
	Create	The Legacy List		Bare Feet w/Mickela Mallozzi	S. Brown Places to Love	Hidden Ireland	
18 MON	2	Dante Part One: The Inferno				POV unseen	
	44	Midsomer Murders Faithful Unto Death, Part Two		Silent Witness Season 25, Episode Three		Masterpiece Miss Scarlet and The Duke, Season One, Episode Three	
	World	Without Precedent: The Supreme Life of Rosalie Abella			Stories from the Stage		PBS NewsHour
	Create	America's Test Kitchen	Key Ingredient w/Sheri Castle	Family Travel w/Colleen Kelly	Joseph Rosendo's Travelscope	Rick Steves' Europe	Fly Brother w/Ernest White II
19 TUE	2	Dante Part Two: Resurrection				Frontline	
	44	Call the Midwife Season 13, Episode One		Masterpiece Nolly, Season One, Episode One		Masterpiece Alice & Jack, Season One, Episode One	
	World	Bonnie Boswell Presents: Saving Moms		Below the Belt: The Last Health Taboo		PBS NewsHour	
	Create	Milk Street Television	Key Ingredient w/Sheri Castle	America's Test Kitchen	New Orleans Cooking...Belton	Rick Steves' Europe	Joseph Rosendo's Travelscope
20 WED	2	Nature Equus: Story of the Horse, Episode Two		Nova Polar Extremes			
	44	Lucy Worsley's Royal Myths & Secrets Elizabeth I		Brokenwood Mysteries Season One, Episode Three			British Antiques Roadshow
	World	(7:30) POV unseen		Frontline		PBS NewsHour	
	Create	Lidia's Kitchen	Key Ingredient w/Sheri Castle	Ireland with Michael	Bare Feet w/Mickela Mallozzi	Rick Steves' Europe	Ireland: County by County
21 THU	2	This Old House	Ask This Old House	American Masters Roberta Flack			My Music with R. Giddens
	44	Father Brown Season 10, Episode Nine		Ms. Fisher's Modern Murder Mysteries Season Two, Episode One		Vienna Blood Season One, Episode One	
	World	Fannie Lou Hamer's America: An America ReFramed Special			POV Shorts		PBS NewsHour
	Create	Milk Street Television	Key Ingredient w/Sheri Castle	Family Travel w/Colleen Kelly	Rick Steves' Europe	Rick Steves' Europe	Joseph Rosendo's Travelscope
22 FRI	2	Stories from the Stage	My Music with R. Giddens	Menus-Plaisirs — Les Troisgros			
	44	Washington Week w/The...	Talking Politics	Firing Line with M. Hoover	Frontline		POV Shorts
	World	American Masters Sandra Day O'Connor: The First				PBS NewsHour	
	Create	America's Test Kitchen	Key Ingredient w/Sheri Castle	Life of Loi	Life of Loi	Life of Loi	Life of Loi
23 SAT	2	Call the Midwife Season 13, Episode One		Masterpiece Nolly, Season One, Episode One		Masterpiece Alice & Jack, Season One, Episode One	
	44	Menus-Plaisirs — Les Troisgros					
	World	American Masters Rita Moreno				Fannie Lou Hamer's America: An America ReFramed Special	
	Create	The Legacy List		Best of the Joy of Painting	Best of the Joy of Painting	Rick Steves Art of Europe	

WHAT'S ON

24 SUN	2	Call the Midwife Season 13, Episode Two		Masterpiece Nolly, Season One, Episode Two		Masterpiece Alice & Jack, Season One, Episode Two		
	44	Nova Polar Extremes						Nature Equus: Story of the Horse, Part Two
	World	Nature Equus: Story of the Horse, Part Two		Ruth Stone's Vast Library of the Female Mind		Dante Part One: The Inferno		
	Create	The Legacy List		Life of Loi	Life of Loi	Rick Steves' Art of Europe		
25 MON	2	Antiques Roadshow LSU Rural Life Museum, Hour Three		Antiques Roadshow Birmingham, Hour Three		Independent Lens Greener Pastures		
	44	Midsomer Murders Death in Disguise, Part One						Masterpiece Miss Scarlet and the Duke, Season One, Episode Four
	World	Pacific Heartbeat Island Cowgirls		Local, USA Minn's Alt-Meat Rev.	Stories from the Stage		PBS NewsHour	
	Create	America's Test Kitchen	Key Ingredient w/Sheri Castle	Life of Loi	Life of Loi	Rick Steves' Europe	Fly Brother w/Ernest White II	
26 TUE	2	Finding Your Roots Secret Lives		American Experience The Cancer Detectives		The Invisible Shield The Old Playbook		
	44	Call the Midwife Season 13, Episode Two						Masterpiece Alice & Jack, Season One, Episode Two
	World	(7pm) Nova Polar Extremes		Secrets of the Surface		PBS NewsHour		
	Create	Milk Street Television	Key Ingredient w/Sheri Castle	Life of Loi	Life of Loi	Rick Steves' Europe	Joseph Rosendo's Travelscope	
27 WED	2	Nature Remarkable Rabbits		Nova A.I. Revolution		Nova Star Chasers of Senegal		
	44	Lucy Worsley's Royal Myths & Secrets Queen Anne						British Antiques Roadshow
	World	(7pm) Independent Lens Greener Pastures		The Invisible Shield The Old Playbook		PBS NewsHour		
	Create	Lidia's Kitchen	Key Ingredient w/Sheri Castle	Life of Loi	Life of Loi	Rick Steves' Europe	Ireland: County by County	
28 THU	2	This Old House	Ask This Old House	American Masters Becoming Helen Keller		Without a Whisper: Konnón...		
	44	Father Brown Season 10, Episode 10						Vienna Blood Season One, Episode Two
	World	America ReFramed The Woman on the Outside			POV Shorts		PBS NewsHour	
	Create	Milk Street Television	Key Ingredient w/Sheri Castle	Life of Loi	Life of Loi	Rick Steves' Europe	Joseph Rosendo's Travelscope	
29 FRI	2	Stories from the Stage	One Voice: The Songs We Share	American Masters Moynihan		Antiques Roadshow		
	44	Washington Week w/The...	Talking Politics	Firing Line with M. Hoover	American Experience The Cancer Detectives		POV Shorts	
	World	(7pm) Feelings Are Facts	Independent Lens Move Me			PBS NewsHour		
	Create	America's Test Kitchen	Key Ingredient w/Sheri Castle	Real Rail Adventures Switzerland		Real Road Adventures	Real Road Adventures	
30 SAT	2	Call the Midwife Season 13, Episode Two		Masterpiece Nolly, Season One, Episode Two		Masterpiece Alice & Jack, Season One, Episode Two		
	44	American Masters Becoming Helen Keller			Without a Whisper: Konnón...		Black Ballerina	
	World	American Experience Zora Neale Hurston: Claiming a Space						America ReFramed The Woman on the Outside
	Create	The Legacy List		Best of the Joy of Painting	Best of the Joy of Painting	Rick Steves' Art of Europe		
31 SUN	2	Call the Midwife Season 13, Episode Three		Masterpiece Nolly, Season One, Episode Three		Masterpiece Alice & Jack, Season One, Episode Three		
	44	Nova						Finding Your Roots
	World	Nature Remarkable Rabbits		Finding Your Roots Secret Lives		Dante Part Two: Resurrection		
	Create	The Legacy List		Real Rail Adventures Switzerland		Rick Steves' Art of Europe		

Full schedules for all channels are available at gbh.org/schedule

What's Cooking on GBH?

Pelham House Clam Chowder

Like many New Englanders, **Amy Traverso** (left) has been a chowder essentialist, believing that the best chowders are achieved by coaxing maximum flavor from a minimum of ingredients. Then she made this herb-scented chowder with Chef Dan Cote at the Pelham House Resort on Cape Cod. A sprinkling of dill and the surprising addition of oregano not only stand up to the briny clam and bacon flavors but enhance them. **Watch it come together on *Weekends with Yankee on Sun (4/21) at 11:30am on GBH 2.***

INGREDIENTS SERVES EIGHT

- 1 pound diced Yukon gold potatoes
- 8 slices thick-cut bacon, diced
- 3 tbsp salted butter
- 1 medium onion, diced
- 2 stalks celery, finely diced
- 2 tsp dried dill
- 1 tsp freshly ground black pepper
- 2 tsp kosher salt, plus more for cooking water
- ½ cup all-purpose flour
- 1 quart (four 8-oz bottles) clam juice
- 2 cups chopped clam meat
- 2 cups light cream
- 2 tbsp chopped fresh oregano
- Chopped fresh dill, for garnish

TO PREPARE

STEP 1 Bring a medium pot of salted water to a boil and add potatoes. Cook until tender, 10 to 12 minutes, then drain and set aside.

STEP 2 In a large pot or Dutch oven over medium heat, cook the bacon, stirring often, until the fat has rendered and turns golden brown, 5 to 7 minutes. Use a slotted spoon to remove the bacon from the pot and set aside. Add the butter, onion, celery, dill, salt and pepper, and cook until the onion is translucent, about 6 minutes.

STEP 3 Add the flour and cook, stirring constantly, for about 4 minutes. Add the clam juice 1 cup at a time, whisking after each addition. The mixture will thicken. Add the potatoes, clams and their liquid and the cream. Simmer until the clams are firm, the chowder has thickened and the flavors have combined, 10 to 15 minutes. Taste and add additional salt and pepper to taste. Just before serving, add two-thirds of the cooked bacon and the oregano. Serve the chowder topped with a sprinkle of the reserved bacon and the chopped fresh dill for garnish.



Do What You Love.
Love What You Do.

www.CambridgeCulinary.com

CSCA
CAMBRIDGE SCHOOL
OF CULINARY ARTS




Professional Programs



Recreational Classes



Private Events

2020 Massachusetts Avenue, Porter Square, Cambridge, MA | 617.354.2020

▶▶▶ Come join us



▶ To learn more or register for any of our events, visit gbh.org/events

GBH invites you to participate in virtual or in-person events where you can engage with experts to learn something new, enjoy a reading with an exciting author or talk with other top-notch talent. Don't forget: You can also visit our GBH Boston Public Library Studio to see a live taping or attend other community happenings. GBH will keep you informed and entertained with a full calendar of upcoming events.



▶ **Books & Brews**
Tue (3/19) at 7pm ET
(In-person)

Join GBH for a thrilling night of psychological twists with **Hank Phillippi Ryan**, the *USA Today* bestselling author. Bring your

burning questions for Hank as we unravel mysteries and get to know the brilliant mind behind the page-turners. Let's brew up an evening of suspenseful sips and plot twists together at Widemaker Taproom & Kitchen in Brighton.

Register here. ▶



▶ **Ask the Expert: Planting, Pampering and Petal Perfection**

Fri (3/15) at 12pm ET
(Virtual)

Whether you live in a rural or urban area, learn the secrets of how to cultivate a vibrant oasis right outside your door. Join GBH and public gardening expert **Karen Daubmann** from Massachusetts Horticultural Society and immerse yourself in the lavish wonders of your own backyard haven.

Register here. ▶



▶ **Birds of a Feather Stroll Together**

Sun (4/27) at 8am and 10am ET
(In-person)

Learn the secrets of chirps and tweets as you stroll through Broadmoor Wildlife Sanctuary in Natick. Let the wings guide you on this enchanting adventure.



Register here. ▶



▶ **Stories from the Stage: Women in Action**

Thu (3/21) at 6:30pm ET (In-person)

The Women's March in 2017, and the marches that followed each year, are only one step in a long journey toward gender equality. Join us as ordinary people share extraordinary stories from the front lines of the women's movement, from defying standards of beauty and behavior to standing up for women's rights, at this taping of *Stories from the Stage*.

▶ Register here.



GBH BPL Studio



▶ **March Outspoken Saturdays**

Sat (3/2) at 2pm ET (In-person)
On the first Saturday of the month, the GBH BPL studio hosts Outspoken Saturdays, a spoken word poetry event for emerging artists. The series is offered in collaboration with spoken word artist **Amanda Shea**.

▶ **Ulysses Quartet at the BPL**
Wed (3/13) at 12pm ET
(In-person)

Join GBH Music in welcoming its quartet in residence, the **Ulysses Quartet**, for a free performance at the GBH Studio.

▶ Check out more GBH BPL Studio events here.



▶ **Front Cover:** NASA, ESA, CSA, STScI, Klaus Pontoppidan (STScI); © Shutterstock.com/BarlianArt (2); GBH Creative. **Page 2:** Celeste Sloman. **Page 3:** Yuchiro Chino via Getty Images; BBC Studios/Neal Street Productions (© BBC Studios); Courtesy of Zahili Gonzalez Zamora; Photo courtesy of Zipporah Films; GBH Creative; © Shutterstock.com/BarlianArt (2); © Shutterstock.com/Barbol; Courtesy of International Women's Day at internationalwomensday.com (2). **Page 4:** Karen Almond / Met Opera; GBH Creative; © 2023 Endemol Shine Australia. All Rights Reserved; Courtesy of International Women's Day at internationalwomensday.com. **Page 6:** BBC Studios/Neal Street Productions (© BBC Studios); Quay Street Productions and MASTERPIECE; Fremantle; SPP & all3media international; Courtesy of International Women's Day at internationalwomensday.com (2). **Page 7:** Set Hernandez; A Woman on the Outside; Pioneer PBS; Courtesy of International Women's Day at internationalwomensday.com. **Page 8:** Arto Perez/© WGBH Educational Foundation; Sam Mirpoorian; Yuchiro Chino via Getty Images; National Archives & Records Administration. **Page 9:** Courtesy APT, KERA and Hangin' On By A Thread Productions; Julie Rosendo; Photo courtesy of Zipporah Films. **Page 10:** Photo by Meredith Nierman for GBH, © 2023 WGBH Educational Foundation; Warner Music Group; Courtesy of International Women's Day at internationalwomensday.com (3); Jayne Henderson Brown; DANTE Produced by Steeplechase Films and Dante Productions in association with PBS, Directed by Ric Burns. **Page 12:** WGBH Educational Foundation; Courtesy of ITV Studios and MASTERPIECE. **Page 13:** NASA, ESA, CSA, STScI, Klaus Pontoppidan (STScI); © Shutterstock.com/BarlianArt (2); GBH Creative; Courtesy of Julia Cort; Meredith Nierman. **Page 14:** OJ Slaughter; GBH Creative; Courtesy of Zahili Gonzalez Zamora. **Page 15:** Meredith Nierman (2); Eve Zuckoff. **Page 16:** Eric Seals; Photo by Joseph Sinnott; Courtesy of University Archives, University at Buffalo, State University of New York; BetterTomorrows. **Page 22:** Katherine Keenan; Photo by Corey Hendrickson; styling by Liz Neily for Yankee Magazine. Bowl from Campfire Pottery, Portland, Maine. **Page 23:** Iden Ford; © Shutterstock.com/Barbol; Photo by Serena Cosenza; Patricia Alvarado Nuñez/GBH; Courtesy of International Women's Day at internationalwomensday.com; © Shutterstock.com/A Periam Photography; Matthew Holler.



What matters to you.



Check out digital editions of EXPLORE GBH!
See page 12 for details.

ADVERTISEMENT

COMPANY

THE SMASH HIT MUSICAL COMEDY

WINNER!
5 TONY AWARDS
INCLUDING BEST REVIVAL OF A MUSICAL

★★★★★
"YES IT'S THAT GOOD!"
Time Out NY

MUSIC AND LYRICS BY

STEPHEN
SONDHEIM

BOOK BY

GEORGE
FURTH

DIRECTED BY

MARIANNE
ELLIOTT



LEXUS
BROADWAY
IN BOSTON
EST. 1984

APRIL 2 – 14 • CITIZENS OPERA HOUSE

GROUPS 10+ SAVE: 617.482.8616

Point32Health

ORIGINALLY PRODUCED AND DIRECTED ON BROADWAY BY HAROLD PRINCE